



LOSBERGER DE BOER



maxiflex Basic P10 Setting trends in modular expanse

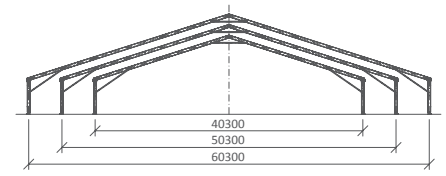
The Losberger De Boer maxiflex P10 trade fair and event hall: one of the largest column free temporary structures in the world.


Over the last quarter of a century, modular temporary structures have traditionally been designed with maximum widths of up to 50 meters restricted in eave height. Thanks to the new Losberger De Boer P10, self-supporting structure, 60 m clear span widths with optimal ceiling heights, open up a multitude of opportunities for the events and exhibition industry. The P10 boasts the full advantages and features of the Losberger De Boer P1 and P3N systems, but with the added benefit of building structures of up to 60 meters wide in any length, with lateral heights of up to 6.80 meters. What's more- the 50 m wide P10 can reach impressive heights of up to 8 meters!

These notable expanses are only possible with the new extremely robust profile cross-section, the structures main components measure a solid 420 x 120 mm. Trade fair halls with large volume requirements can now be effortlessly achieved, huge warehouses for trade fair goods with essential height requirements are made simple. Even temporary mobile event solutions the size of football pitches are accomplished with ease. The maxiflex P10 offers an innovative and flexible large space solution, setting new trends for the delivery and execution of trade fairs and large scale events – as always, in premium quality.

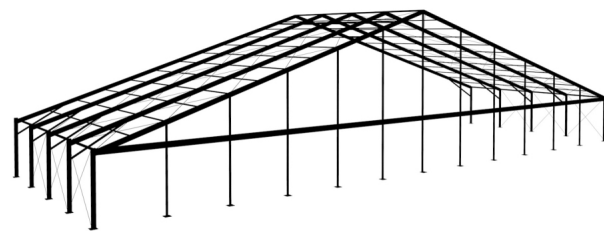


Dimensions



Type	Profile	Truss profile (mm)	Width (m)	Side height (m)	Ridge height (m)	Truss-distance (m)
	P10	420 x 120	40.8	4.00/5.40/6.80/8.00	10.32/11.72/13.09/14.18	5
			50.8	4.00/5.40/6.80/8.00	11.91/13.31/14.68/15.77	
			60.8	4.00/5.40/6.80	13.50/14.90/16.26	

Roof slope for all saddle roof structures in 18 degrees. Snow load: none (available upon request). Longest component: 11.5. Ridge struts are necessary for every type. Except for 40.8/400, 50.8/400 and 60.8/400 additional corner/eave struts are fitted. Subject to technical changes.



Example: Losberger De Boer maxiflex 60.8/540 Basic P10

Technology

Resulting from its modularity it can be combined and extended in various ways. Trouble-free transport, assembly and disassembly, storage and maintenance. Thanks to the great interchangeability of tent components within the modular system and thanks to the compatibility with the P1-System, extensions and different widths can be created without expensive special solutions. Possible to install with and without system cassette flooring, only few specific expansion cassettes necessary. Option for mezzanine floors for complete upper levels or galleries with the maxiflex Emporium products.

Covers

Textile covers made of polyester fabric, coated with PVC on both sides. Curtains with PVC-giders for easy fitting in curtain groove. Side and gable curtains can be produced with zips or lace and grommet closure. Thanks to the compatibility with maxiflex P1 components, system wall elements are available in glass or PVC for every P10 type. Choose from either vertical or horizontal wall elements.



Technical description

Truss/Gable struts: premium, extruded 4-Nut aluminium hollow profile
 Steel parts: hot-dip galvanized in accordance with DIN EN ISO 1461
 Ground anchoring: Ground stakes
 Add-on options: Yes

Load requirements/ Technical data

Wind load: according to DIN EN 13782
 Min. length: 30.00 m
 Max. length: unlimited in truss-distance

Losberger GmbH
 Fürfeld · Gottlieb-Daimler-Ring 14
 74906 Bad Rappenau · Germany
 Phone: +49 7066 980-0
 Fax: +49 7066 980-232
 E-Mail: losberger@losbergerdeboer.com
 www.losbergerdeboer.com
 Losberger De Boer Group